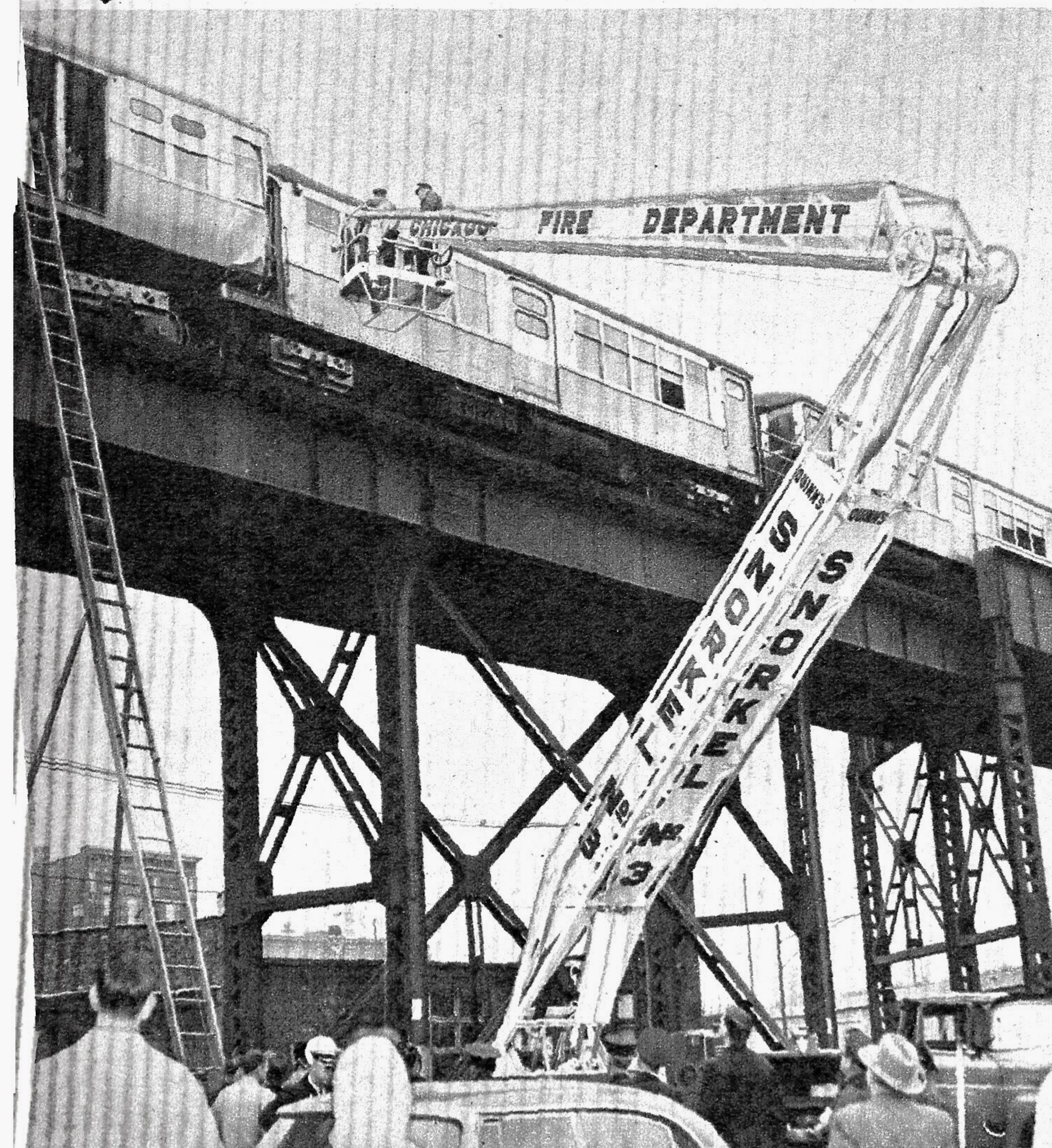


THE CITY FIRE department's newest aid, the Snorkel, gets a workout in rescuing injured passengers from a wrecked elevated train. Below members of the Chicago Civil Defense Rescue Service stand ready to assist the firemen in moving the victims quickly to ambulances.



CRASH of a cargo plane at Midway airport last year found this trio directing rescue activity. From left are Charles M. Johnson, chief supervisor, C. D. Fire and Rescue Service in Chicago; Leo A. Hoegh, National Civil Defense Director and Fire Commissioner Robert Quinn

